



SRK INSTITUTE OF TECHNOLOGY

Enikepadu, Vijayawada 521108

Approved by AICTE, An Autonomous Institution, Affiliated to JNTUK, Kakinada
ISO 9001:2015 Certified Institution, Accredited with NAAC 'A' grade



STUDENTS FEEDBACK ON CURRICULUM ACADEMIC YEAR 2023-24

1. OBJECTIVE OF FEEDBACK

The college is affiliated to Jawaharlal technological university, Kakinada. The syllabus finalized by JNTUK is implemented in the affiliated colleges. The IQAC of the college identifies the curricular gaps and plans for co-curricular/extracurricular activities in college. The college obtains feedback from all the stakeholders like students, alumni, employer, parents and teachers on curriculum/syllabus to enrich the quality of activities performed in college for improvement of the professional skills, employability and entrepreneurial skills of the students.

SUMMARY OF FEEDBACK OBTAINED FROM THE STUDENTS :

S.NO	ACADEMIC YEAR	NO.OF SAMPLE FEEDBACKS COLLECTED
1	2023-24	46

2. The sample of students feedback on curriculum was taken from the students of CE,ME, CSE, ECE, EEE, IT,MBA,IMBA,MCA at the end of each semester.

S.NO	COURSES OFFERED	NO.OF.SAMPLES COLLECTED
1	CE	4
2	MECH	4
3	EEE	4
4	ECE	4
5	CSE	17
6	IT	4
7	MBA	2
8	IMBA	5
9	MCA	2


PRINCIPAL

SRK INSTITUTE OF TECHNOLOGY
ENIKEPADU, VIJAYAWADA-521 108



SRK INSTITUTE OF TECHNOLOGY

Enikepada, Vijayawada 521108

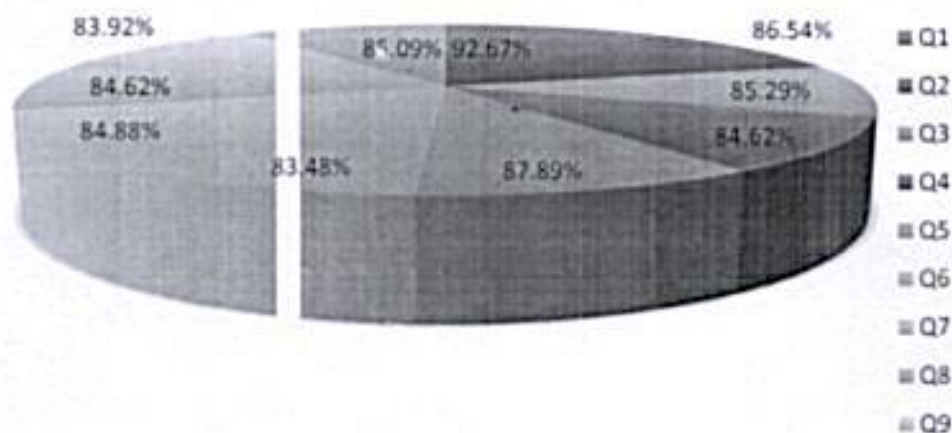
Approved by AICTE, An Autonomous Institution, Affiliated to JNTUK, Kakinada
ISO 9001:2015 Certified Institution, Accredited with NAAC 'A' grade



STUDENTS FEEDBACK AND ANALYSIS ON CURRICULUM DESIGN 2023-24

S/NO	QUESTIONNAIRE	FEEDBACK
1	How do rate the relevance of the curriculum and syllabi to the courses?	92.67%
2	How do rate the extent of syllabi covered in the class?	86.54%
3	How do you rate the offering of the electives in terms of relevancy to the curriculum?	85.29%
4	How do you rate the usage of teaching aids and ICT in the class by faculty to facilitate teaching?	84.62%
5	How do you rate the transparency in the assessment processes?	87.89%
6	How do you rate the opportunities in the college for research activities?	83.48%
7	How do you rate the promptness in evaluating the answer scripts?	84.88%
8	How do you rate the out of class room learning (guest lectures, seminars, workshop, value added programmes, conferences, competitions)	84.62%
9	How do you rate the opportunity for students to participate in internship, student exchange and field visit?	83.92%
10	How do you rate the size of the syllabus in terms of load on the student?	85.09%

Student Feedback on Curriculum Design 2023-24 (SEM I)



PRINCIPAL