



SRK INSTITUTE OF TECHNOLOGY

Enikepadu, Vijayawada 521108

Approved by AICTE, An Autonomous Institution .Affiliated to JNTUK, Kakinada
ISO 9001:2015 Certified Institution, Accredited with NAAC 'A' grade

STUDENTS FEEDBACK ON CURRICULUM ACADEMIC YEAR 2024-25

1 .OBJECTIVE OF FEEDBACK

The college obtains feedback from all the stakeholders like students, alumni, employer, and teachers on curriculum/syllabus to enrich the quality of activities performed in college for Improve the teaching-learning process, Enhance facilities and services, Inform institutional improvement, Support professional development, Gauge overall student satisfaction.

SUMMARY OF FEEDBACK OBTAINED FROM THE STUDENTS :

S.NO	ACADEMIC YEAR	NO.OFSAMPLE FEEDBACKS COLLECTED
1	2024-25	45

2. The sample of students feedback on curriculum was taken from the students of CE,ME, CSE, EEE, ECE, EVT ,CSE,CSE-DS ,CSE AI&ML,IT,MBA,IMBA,MCA at the end of each semester.

S.NO	COURSES OFFERED	NO.OF.SAMPLES COLLECTED
1	CE	4
2	MECH	4
3	EEE	4
4	ECE	5
5	EVT	2
6	CSE	6
7	CSE-DS	5
8	CSE-AI&ML	6
9	IT	5
10	MBA	1
11	IMBA	2
12	MCA	1


PRINCIPAL
SRK INSTITUTE OF TECHNOLOGY
ENIKEPADU, VIJAYAWADA-521 108.



SRK INSTITUTE OF TECHNOLOGY

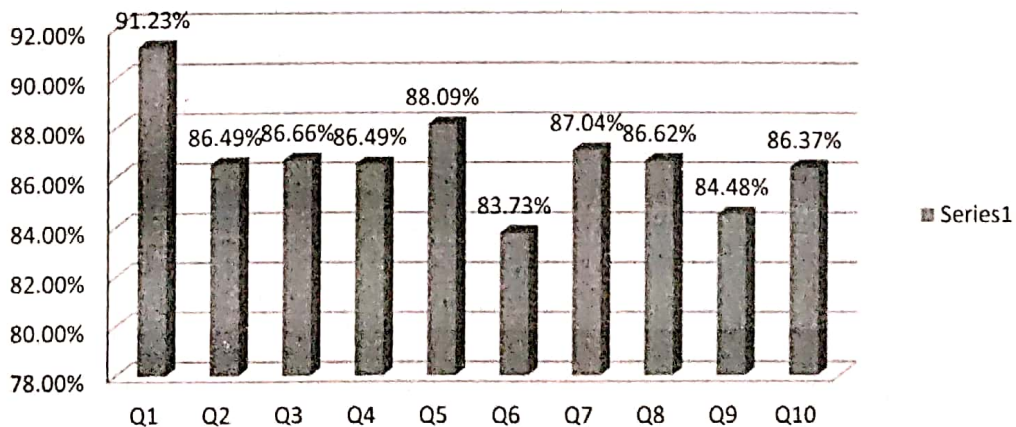
Enikepadu, Vijayawada 521108

Approved by AICTE, An Autonomous Institution, Affiliated to JNTUK, Kakinada
ISO 9001:2015 Certified Institution, Accredited with NAAC 'A' grade

STUDENTS FEEDBACK AND ANALYSIS ON CURRICULUM DESIGN 2024-25

S/NO	QUESTIONNAIRE	FEEDBACK
1	How do rate the relevance of the curriculum and syllabi to the courses?	<u>91.23%</u>
2	How do rate the extent of syllabi covered in the class?	<u>86.49%</u>
3	How do you rate the offering of the electives in terms of relevancy to the curriculum?	<u>86.66%</u>
4	How do you rate the usage of teaching aids and ICT in the class by faculty to facilitate teaching?	<u>86.49%</u>
5	How do you rate the transparency in the assessment processes?	<u>88.09%</u>
6	How do you rate the opportunities in the college for research activities?	<u>83.73%</u>
7	How do you rate the promptness in evaluating the answer scripts?	<u>87.04%</u>
8	How do you rate the out of class room learning (guest lectures, seminars, workshop, value added programmes, conferences, competitions)	<u>86.62%</u>
9	How do you rate the opportunity for students to participate in internship, student exchange and field visit?	<u>84.48%</u>
10	How do you rate the size of the syllabus in terms of load on the student?	<u>86.37%</u>

Student Feedback on Curriculum Design 2024-25 (SEM I)




PRINCIPAL

PRINCIPAL
SRK INSTITUTE OF TECHNOLOGY
ENIKEPADU, VIJAYAWADA-521 1

